



# **Student Success And Wellness**

**Addressing the Needs of the Whole Child**

# **Student Success and Wellness Program**



**On July 18th, Governor Mike DeWine, signed our state's two-year operating budget that included a brand-new \$675 million investment in Ohio's students.**

**The goal of the investment is to establish new programs and expand on existing behavioral and physical health care services in schools to give all Ohio children an opportunity to grow and succeed.**

**School districts are required to develop a plan in collaboration with at least one community partner and we believe it should be their local health department.**

**The Lake County General Health District created a scalable framework to meet the needs of our local school districts. Our goal now is to enable other health departments to use the platform with their local school districts.**

**By collaborating together we can become local Chief Health Strategists.**

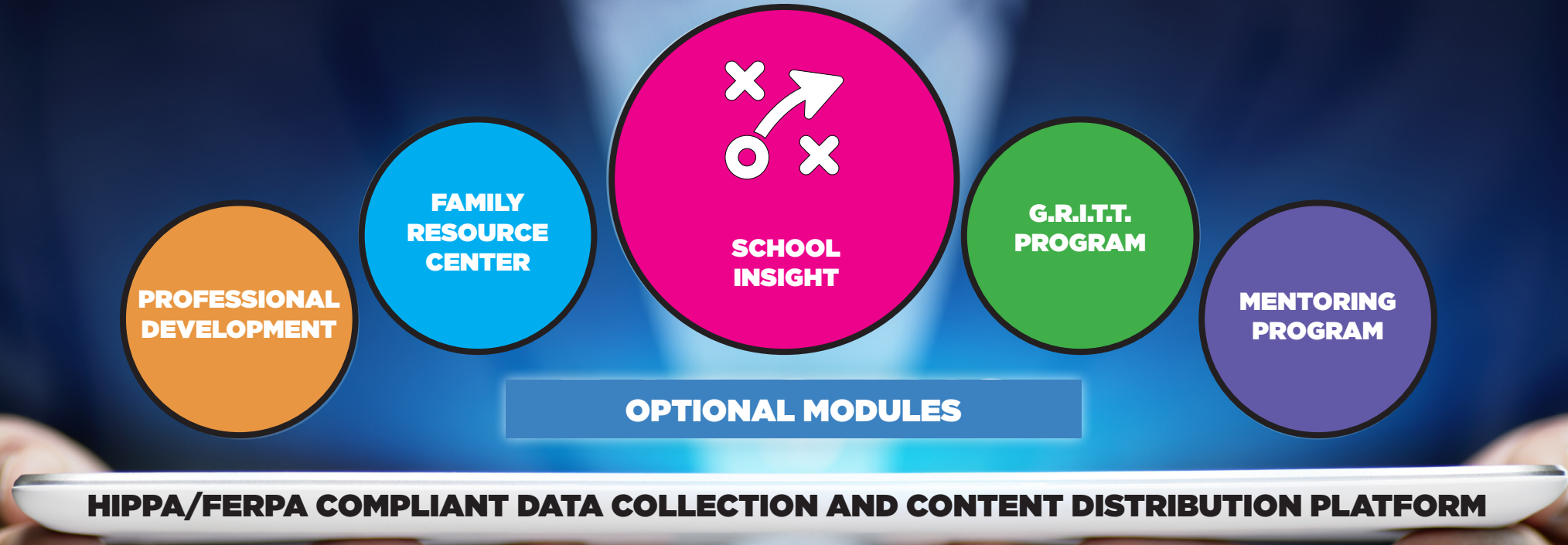
# **Student Success and Wellness Program**

**School districts can use the student wellness and success funds for any of the following initiatives or a combination of any of the following initiatives:**

- **Mental health services;**
- **Services for homeless youth;**
- **Services for child welfare involved youth;**
- **Community liaisons;**
- **Physical health care services;**
- **Mentoring programs;**
- **Family engagement and support services;**
- City connects programming;
- **Professional development regarding the provision of trauma informed care;**
- **Professional development regarding cultural competence;**
- **Student services provided prior to or after the regularly scheduled school day or any time school is not in session.**

**The Lake County General District program and framework can help address the above bold initiatives, the requirement to collect and analyze student/community data, and way to engage other community partners.**

# Student Success and Wellness Novel Framework

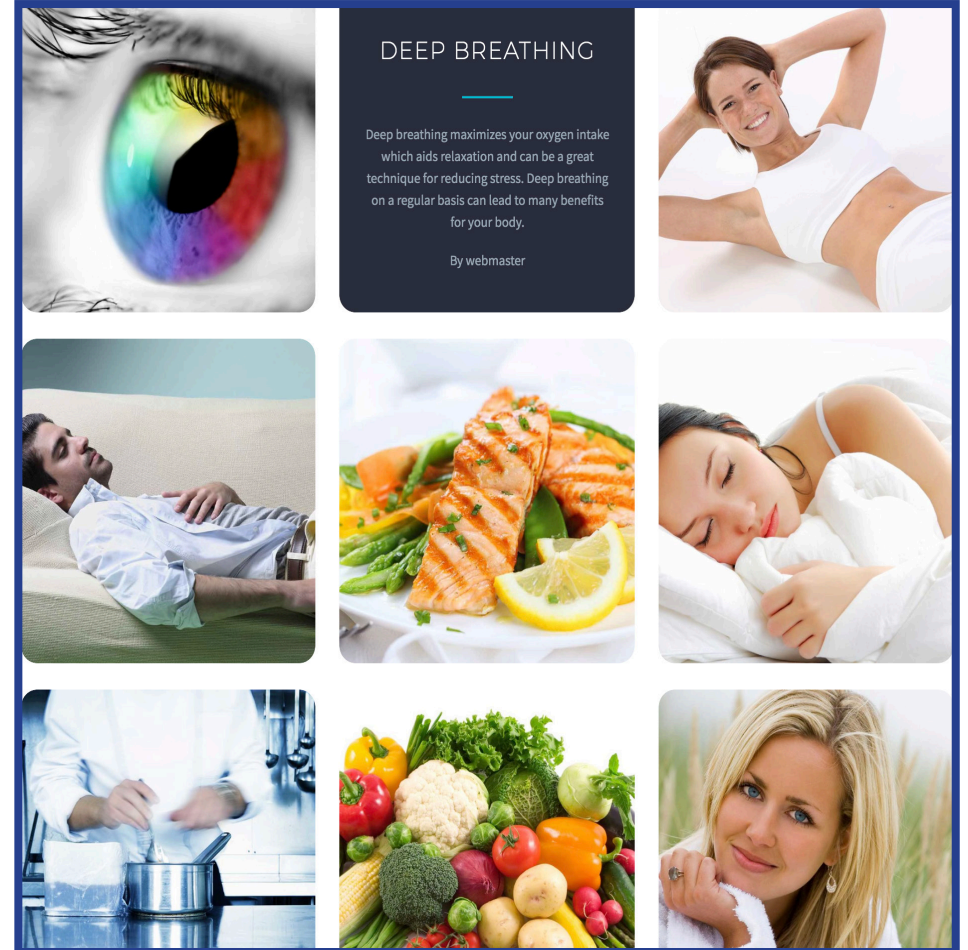




# Student Success and Wellness Base Platform

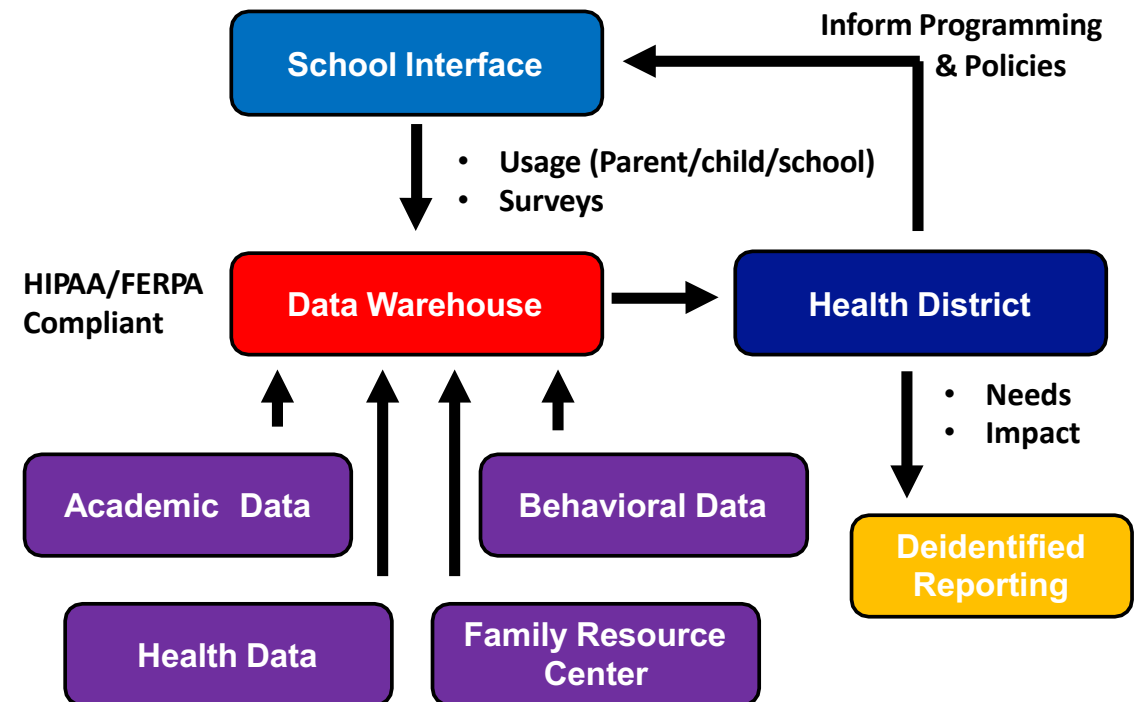
The Student Success and Wellness Program provides a secure, online platform to engage and support students, teachers, and family members. The base platform features:

- **Data Collection and Storage**
  - » Health metrics
  - » Assessments
  - » Surveys
- **Content Distribution**
  - » Video Gallery
  - » Blog
  - » Educational Library
- **Engagement Tools**
  - » Events Calendar
  - » Challenges
  - » Resource Guide
- **Custom Development Opportunity**



# Student Success: School Insight Module

- **Academic achievement is affected by a complex interplay of individual, socioeconomic, ecological, and school-specific factors** (Stewart 2008)
- **Methodology**
  1. Collect data
  2. Identify gaps and risk factors
  3. Deliver programming and support
  4. Track impact
  5. Report
- **Impact**
  - » Improve student health and academic achievement
  - » Identify protective factors, programs, and validate preventive interventions
  - » Enhance/increase parent engagement a student's academic pathway
  - » Early detection of risk factors and develop a trajectory of student success

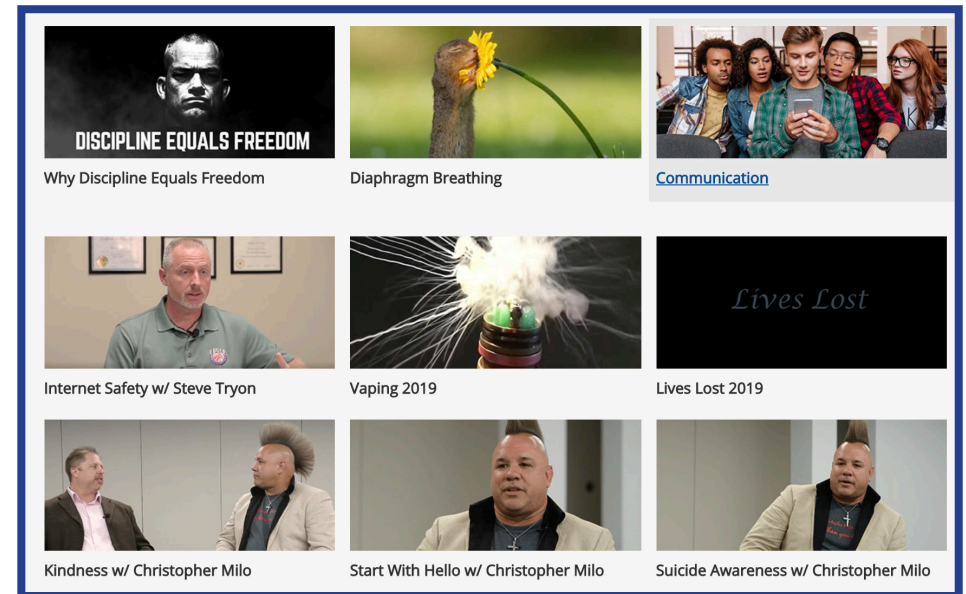


# Student Success: G.R.I.T.T. Module

## All Choices Matter G.R.I.T.T. Program (Gratitude. Resilience. Integrity. Tolerance. Teamwork.)

- » G.R.I.T.T. is designed to help students, teachers, and parents work through some of the issues students face every day, including, but not limited to:
  - **Careers:** Employment, Enrollment, Entrepreneurship, Career Interviews, Workforce Readiness
  - **Character:** Courage, Creativity, Determination, Gratitude, Human Rights, Kindness, Leadership, Perseverance, Self Esteem, Uniqueness
  - **Tough Stuff:** Abuse, Addiction, Bullying, Conflict Resolution, Cyber Safety, Mental Health, Money, Safety, Self Improvement, Sexting, Stress, Suicide

All Choices Matter is a 501(c)(3) nonprofit and Lake County General Health District community partner.



# Student Success: Family Resource Center Module

The screenshot displays the Family Resource Center Gateway interface. On the left is a dark sidebar with navigation links: Overview, Client Details (active), and Change Password. The main area shows the 'CLIENT DETAILS FORM'. This form includes fields for Agency Name, Resource Center Location, and Community Coordinator, each with a dropdown menu. Below these are 'Client Details' fields: First Name, Middle Initial (M.I.), Last Name, Street Address, City, State, Zip, Phone, Date of Birth, and Race. The Race section has radio buttons for American Indian/Alaska Native, Caucasian/White, and Pacific Islander. An 'Add New Session' modal is open in the foreground, featuring a red header and fields for Date, New session (with a red asterisk), Existing Session (with a red asterisk), Referred By, Resource Center Location, and Community Coordinator. It also includes a text area for 'Explain What Services or Resources Client Would Like Help Obtaining' and a 'Client Questionnaire' section with a 'Housing' sub-section. The Housing section has a text area for 'Please specify your housing situation as of today.' and a question 'Would you consider your housing safe? (Free of mold, bug infestations, or other hazards)' with Yes/No radio buttons. A 'Follow up completed' section with Yes/No radio buttons is also visible. A green 'Add New Session' button is located in the bottom left of the modal.

The Family Resource Center Gateway provides a secure way to track clients, referrals, and support session details to ensure continuity of care.

Offers multi-site support and enables family resource center support professionals to keep a current and accurate list of potential referral options.

The gateway features:

- Client intake forms
- Session history
- Follow up schedule
- Progress notes



# **Student Success: Mentorship Module**



- **13 Messages from Milo Virtual Mentoring Program**
  - » Be Positive, Be Genuine, Accept, Love One Another, Listen, Communicate, Work Together, Be Curious, Inspire, Coach, Use Your Talents, Be Creative, Trust
    - Small ideas in small groups become life changing opportunities for everyone
    - Improves culture, morale, self-esteem, and confidence
- **Youth Leadership Summits**
  - » Engage and inspire individuals to be positive change agents, to be passionate, and to take charge of their future
  - » Free, full-day conference with attendance goal of 500+

**Christopher Milo, a partner of the Lake County General Health District, is an internationally renowned concert pianist and motivational speaker. He has spoken to over 500,000 students, parents and educators on topics of Leadership, Anti Bullying, Suicide Solutions, Drug and Alcohol Abuse, Cutting and other forms of Self Harm.**

# Student Success: Professional Development Module

Professional development is a requirement for all teachers and the vast majority of community support professionals. Professional development is the strategy schools and school districts use to ensure that educators continue to strengthen their practice throughout their career.

High-quality teaching is vital for student success. Research shows that effective teachers are the most important factor contributing to student achievement.

Recent evidence suggests that a teacher's impact on student achievement remains reasonably consistent even if the teacher changes schools and regardless of whether the new school is more or less advantaged than the old one.

Our goal is to simplify the professional development process while increasing the number of continuing education topics available through the health department and our partners.

